

Data sheet

# High capacity Fishbone Plate Heat Exchanger SL140

Description



Fishbone Plate Heat Exchangers - are designed with the focus on medium and high capacity applications in the areas of:

- air conditioning,
- HVAC,
- solar heating,
- heat recovery or
- any other application with a heat transfer between single phase liquids.

Approval:  
Pressure Equipment Directive (PED).

Ordering

1-pass heat exchanger **SL140-SB**

Picture	No. of plates, n	Code No.		
		SL140 TL	SL140 TM	SL140 TK
	20	079U6131	079U6152	079U6173
	30	079U6132	079U6153	079U6174
	40	079U6133	079U6154	079U6175
	50	079U6134	079U6155	079U6176
	60	079U6135	079U6156	079U6177
	70	079U6136	079U6157	079U6178
	80	079U6137	079U6158	079U6179
	90	079U6138	079U6159	079U6180
	100	079U6139	079U6160	079U6181
	110	079U6140	079U6161	079U6182
	120	079U6141	079U6162	079U6183
	130	079U6142	079U6163	079U6184
	140	079U6143	079U6164	079U6185
	160	079U6145	079U6166	079U6187
	180	079U6147	079U6168	079U6189
	200	079U6149	079U6170	079U6191

2-pass heat exchanger **SL140-SB**

Picture	No. of plates, n	Code No.		
		SL140 TL	SL140 TM	SL140 TK
	20/20	079U7205	079U7242	079U7178
	25/25	079U7206	079U7243	079U7179
	30/30	079U7207	079U7244	079U7225
	35/35	079U7208	079U7245	079U7180
	40/40	079U7209	079U7246	079U7181
	45/45	079U7210	079U7247	079U7182
	50/50	079U7211	079U6992	079U7183
	55/55	079U7171	079U7196	079U7184
	60/60	079U7213	079U7250	079U7185
	65/65	079U7172	079U7197	079U7186
	70/70	079U7215	079U7198	079U7187
	80/80	079U7217	079U7199	079U7189
	90/90	079U7219	079U7201	079U7191
	100/100	079U6667	079U7258	079U7193

Accessories - **Insulation SL140 MW**

Mineral wool with metal sheet cover (MW)	
TL, TK, TM	Code No.
Insulation MW SL140 20-50	079U1020
Insulation MW SL140 51-80	079U1021
Insulation MW SL140 81-120	079U1022
Insulation MW SL140 121-160	079U1023
Insulation MW SL140 161-200	079U1024

Accessories - **Insulation SL140 PU**

Polyurethane (PU)	
TL, TK, TM	Code No.
INS PU SL140T(K,L,M),DW:20-50	079G1675
INS PU SL140T(K,L,M),DW:51-80	079G1676
INS PU SL140T(K,L,M),DW:81-120	079G1677
INS PU SL140T(K,L,M),DW:121-160	079G1678
INS PU SL140T(K,L,M),DW:161-200	079G1679

Accessories - **Tailpieces**

Type	Code No.
COMPLETE WELDING CON. PIECE 2.5" AISI 316	079U0792
COMPLETE WELDING CON. PIECE 2.5" ST.52-3	079U0787

Accessories - **Bracket**

Type	Code No.
FOOT COMPLETE SL140, AISI 304	079U0886
FOOT COMPLETE SL140, AISI 316	079U0885

Notes:  
Heat Exchanger is supplied without Brackets.

Technical data

Heat exchanger **SL140**

Type		SL140 TL	SL140 TM	SL140 TK
Max working pressure	bar	25		
Min. / Max. temperature	°C	-196 / 225		
Flow medium		DH: Circulation water / glycolic water up to 50% DC: ethylene-, propylene-glycolic water, ethanol-water solutions and other suitable heat transfer media. (Please contact your Danfoss representative for different medium.)		
Volume / Channel	Ltr	0.320		
Connections		External thread R2.5 - tapered 1.4404		
Weight	kg	16.5 + 0.58*NoP		
<b>Materials</b>				
Plate material		Stainless steel, mat. no. 1.4404 (316L)		
Brazing		Copper		

Insulation

Type		Mineral wool shell with metal sheet cover (MW)	Polyurethane shell (PU)
Wall thickness	mm	40	20
Heat conductivity λ	W/mK	0.039	0.026
Max. temp.	Permanent	150	110
	Short term peak	180	130
Surface finish		Aluminium sheet cover	Not performed (closed structure)

**Note:**  
For more details about insulation please contact your Danfoss sales representative.

Dimensions

Brazed Plate Heat Exchanger

Type	Connections	
	Thread	
A (mm)	611	
B (mm)	241	
C (mm)	520	
D (mm)	150	
F (mm)	30	
G (mm)	31	

Type	E (mm)
SL140 TK	6+2,9*NoP
SL140 TM	
SL140 TL	

*NoP = number of plates*

**Insulation**

**PU - insulation**

**MW - insulation**

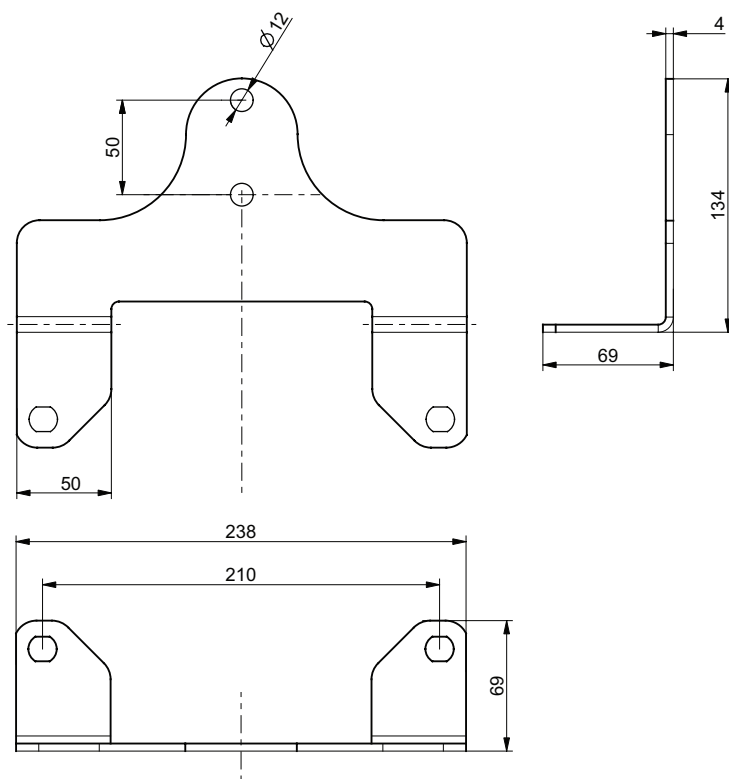
Type	A	B	E	Code No.
	mm			
MW	696	333	323	<b>079U1020</b>
			412	<b>079U1021</b>
			526	<b>079U1022</b>
			642	<b>079U1023</b>
			758	<b>079U1024</b>
PU	694	333	318	<b>079G1675</b>
			339	<b>079G1676</b>
			345	<b>079G1677</b>
			351	<b>079G1678</b>
			357	<b>079G1679</b>

**Note:**  
Dimensions only to be used for your reference and not to be used for engineering or construction purposes.

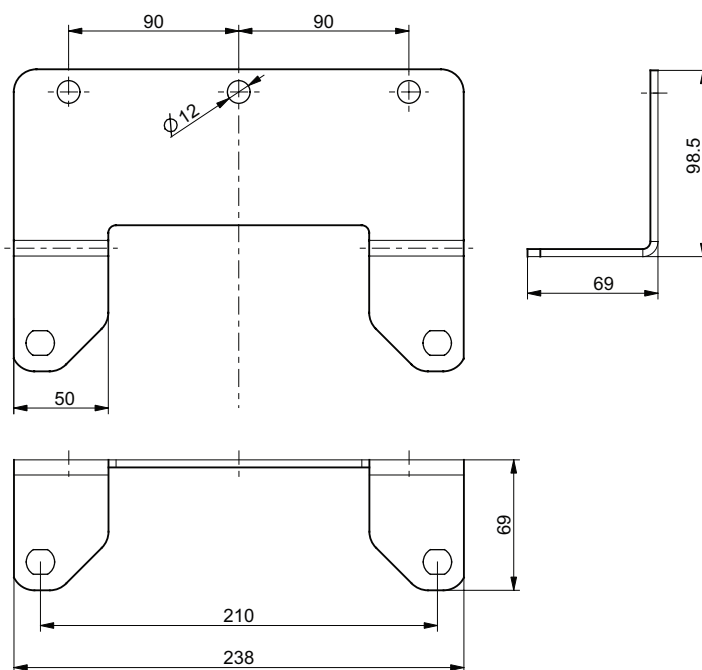
Dimensions (continuous)

Brackets

Front



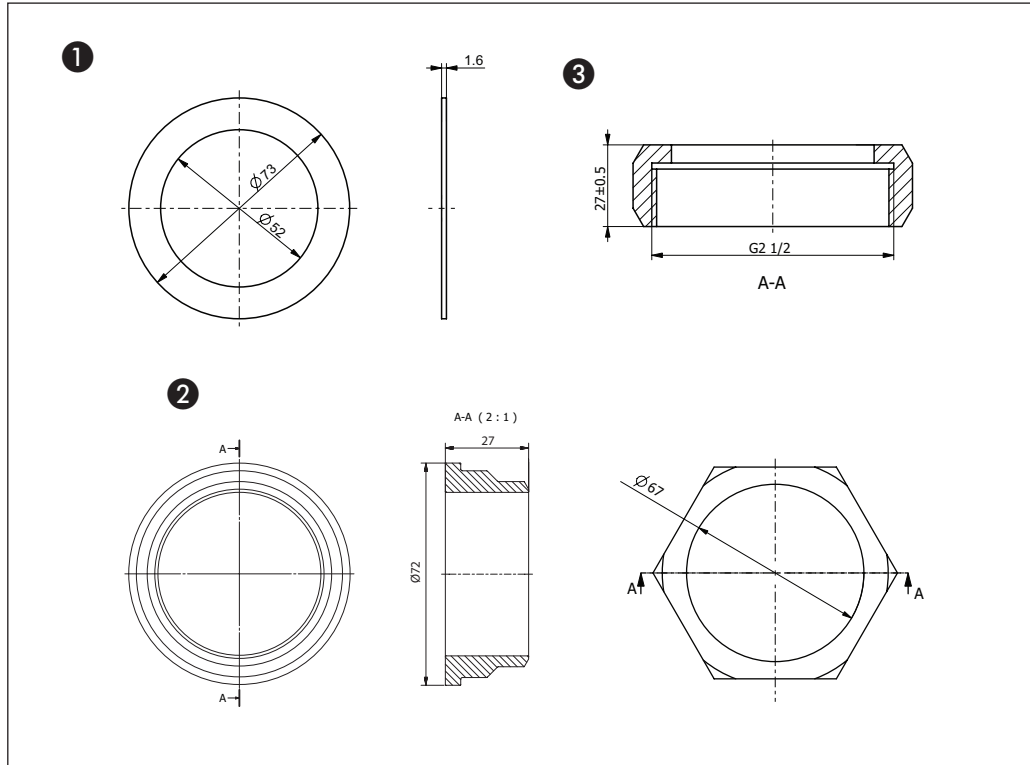
Back



**Note:**  
Dimensions only to be used for your reference and not to be used for engineering or construction purposes.

1. Gasket for 2.5" union
2. Welded nipple 2.5"
3. Union nut 2.5"

Weld On set



**Note:**  
Weld on set include 1pc of gasket, nipple and union nut.

**Danfoss A/S**

Climate Solutions • danfoss.com • +45 7488 2222

Any information, including, but not limited to information on selection of product, its application or use, product design, weight, dimensions, capacity or any other technical data in product manuals, catalogues descriptions, advertisements, etc. and whether made available in writing, orally, electronically, online or via download, shall be considered informative, and is only binding if and to the extent, explicit reference is made in a quotation or order confirmation. Danfoss cannot accept any responsibility for possible errors in catalogues, brochures, videos and other material. Danfoss reserves the right to alter its products without notice. This also applies to products ordered but not delivered provided that such alterations can be made without changes to form, fit or function of the product.

All trademarks in this material are property of Danfoss A/S or Danfoss group companies. Danfoss and the Danfoss logo are trademarks of Danfoss A/S. All rights reserved.