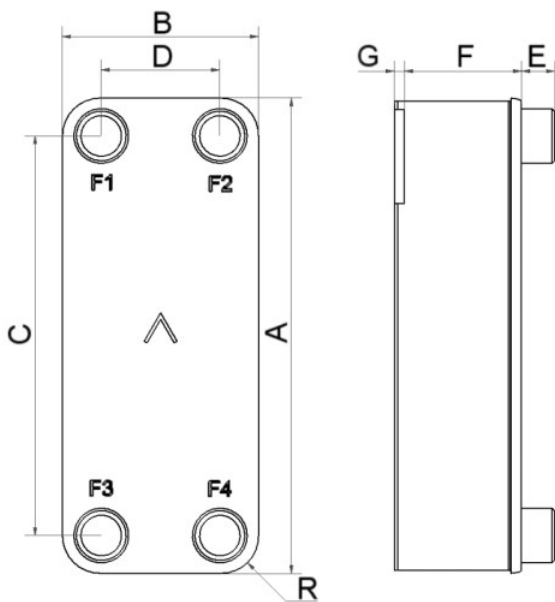


# SWEP B220

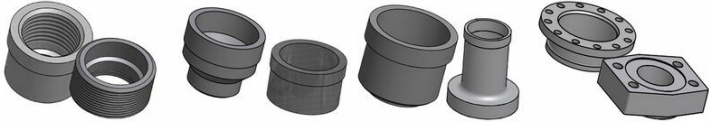
B220 is a compact but highly efficient Brazed Plate Heat Exchanger, which offers great heat transfer efficiency at a low cost. One main application is high efficiency tap water heating, but it can also be used in other single-phase applications such as oil cooling, space heating and desuperheaters. Thanks to its two-stack feature, the thermal length can be varied, and it is possible to get a tailored top performing product for each application.



<b>Maximum number of plates (NoP)</b>	300
<b>Max flow</b>	39 m <sup>3</sup> /h (171.71 gpm)
<b>Channel volume</b>	0.14/0.14 dm <sup>3</sup> (0.0049/0.0049 ft <sup>3</sup> )
<b>Material</b>	316/316L stainless steel plates, copper brazing
<b>Weight excl. connections</b>	5.30+(0.321*NoP) kg 11.68+(0.708*NoP) lb
<b>Max Particle Size (mm)</b>	0.7



#	MM	IN
A	524	20.63
B	202	7.95
C	442	17.4
D	120	4.72
F	6+1.73*(NoP)	0.24+0.07 *(NoP)
G	4	0.16
R	41.6	1.64
E_1	54	2.13
E_2	27	1.06
E_3	30	1.18



Threaded Connection   Victaulic Connection   Solder Connection   Flange Connection

