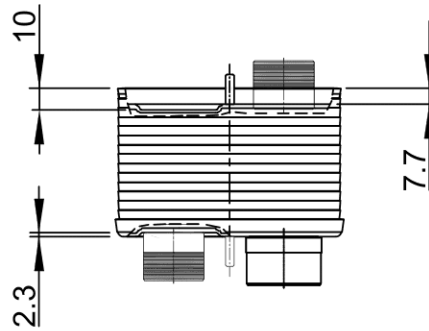
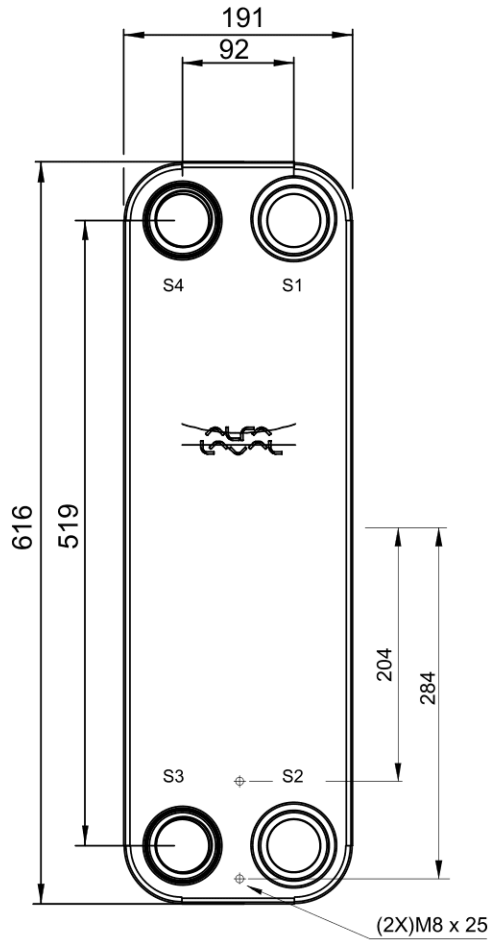
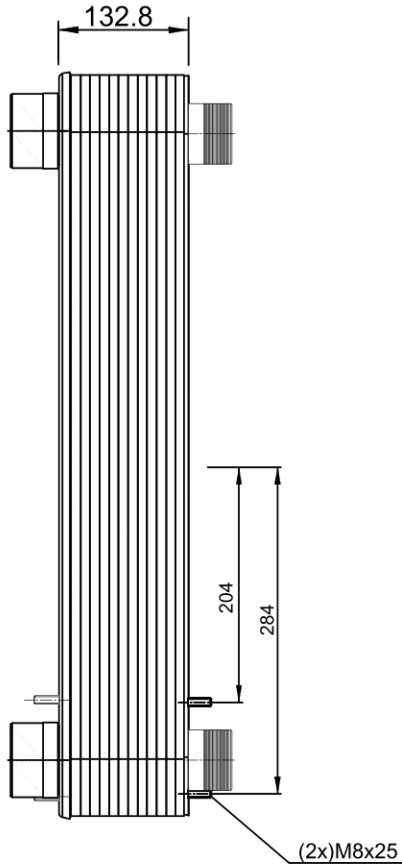
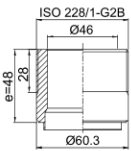


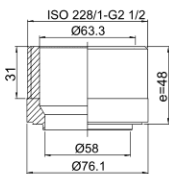
Note that all unique customer requirements (i.e tolerance) need to be verified thru Alfa Laval.



B 23
ALLOY 316
S3,S4,T1,T2



O 4
ALLOY 316
S1,S2



HEATING SURFACE m²
 NETWEIGHT 23.6 kg
 OPERATING WEIGHT kg
 PLATE MATERIAL ALLOY 316
 PLATE GROUPING 1*22ML/1*23MH

ALL DIMENSIONS IN MILLIMETERS

| SIDE | MEDIA | INLET | TEMP. °C | OUTLET | TEMP. °C | FLOW RATE | PRESSURE DROP | LIQUID VOL. |
|------|-------|-------|----------|--------|----------|-----------|---------------|---------------------|
| 1 | Water | S1 | °C | S2 | °C | kg/h | kPa | 4.8 dm ³ |
| 2 | Water | S3 | °C | S4 | °C | kg/h | kPa | 4.6 dm ³ |



PRESSURE VESSEL APPROVAL PED
 CB110-46M (3287184150)

www.alfalaval.com

CUSTOMER NAME / REF. NO.

COMPANY / REF.

TOTAL LENGTH 219 mm
 TOTAL WIDTH 191 mm
 TOTAL HEIGHT 616 mm



6/4/2023
 REV 0