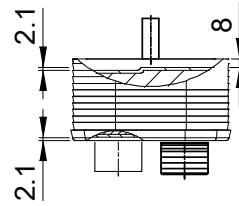
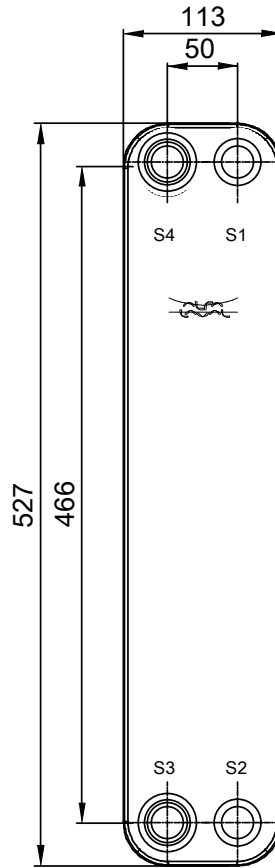
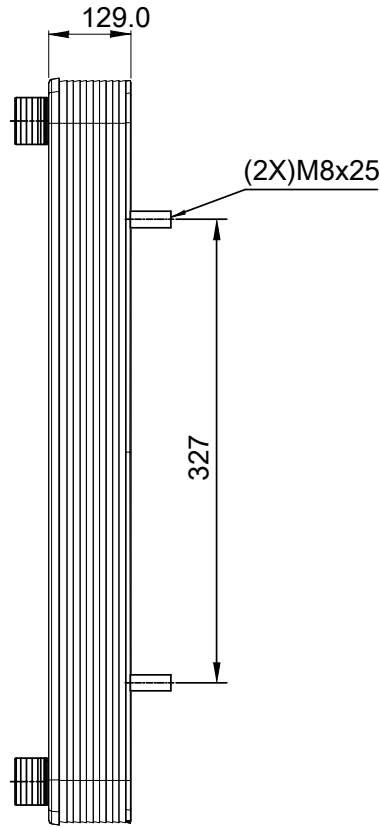
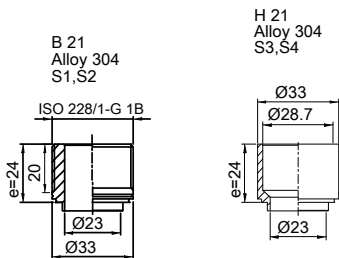


Note that all unique customer requirements (i.e tolerance) need to be verified thru Alfa Laval.



Frameplate is depressed 2.1 mm at connections S3 and S4 if holed.
 Pressureplate is depressed 2.1 mm at connections T3 and T4 if holed.

T1 T2 T3 T4 locations on back side correspond to S1 S2 S3 S4 on front side

HEATING SURFACE
 NETWEIGHT 11.0 kg
 OPERATING WEIGHT
 PLATE MATERIAL Alloy 316
 PLATE GROUPING 1*24H/1*25H

ALL DIMENSIONS IN MILLIMETERS

| SIDE | MEDIA | INLET | TEMP. | OUTLET | TEMP. | FLOW RATE | PRESSURE DROP | LIQUID VOL. |
|------|-------|-------|-------|--------|-------|-----------|---------------|----------------------|
| 1 | | | | | | | | 2.47 dm ³ |
| 2 | | | | | | | | 2.58 dm ³ |

PRESSURE VESSEL APPROVAL PED

CB60-50H-F (3287079137)

www.alfalaval.com

CUSTOMER NAME / REF. NO.

TOTAL LENGTH 170.0 mm
 TOTAL WIDTH 113.0 mm
 TOTAL HEIGHT 527.0 mm

COMPANY / REF.



8/18/2021
 REV 0