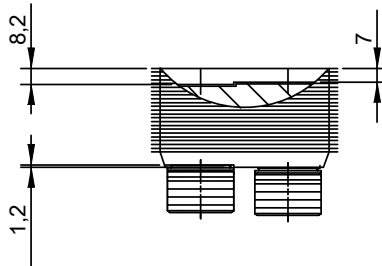
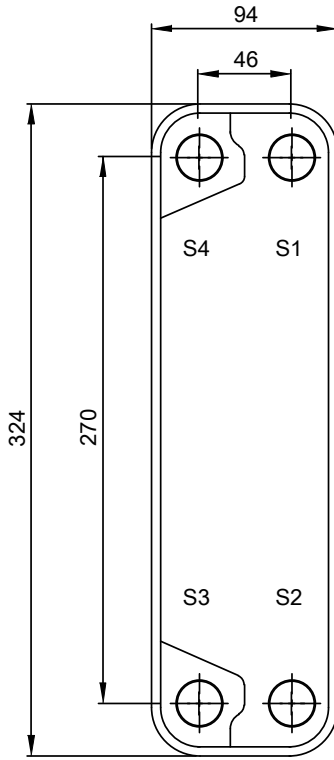
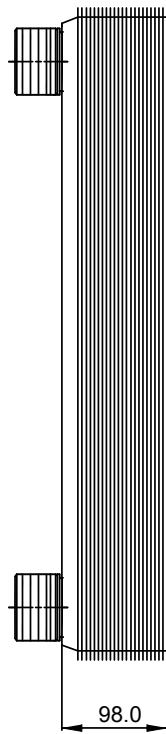
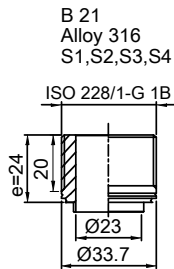


Note that all unique customer requirements (i.e tolerance) need to be verified thru Alfa Laval.



Frameplate is depressed 1.2 mm at connection S3/S4  
 Pressureplate is depressed 1.2 mm / even number of channel  
 plates at connections T3/T4 / uneven number of channel plates at  
 connections T1/T2.

T1 T2 T3 T4 locations on back side  
 correspond to S1 S2 S3 S4 on front side

HEATING SURFACE  
 NETWEIGHT 5.67 kg  
 OPERATING WEIGHT  
 PLATE MATERIAL Alloy 316  
 PLATE GROUPING 1\*29H/1\*30H

ALL DIMENSIONS IN MILLIMETERS

SIDE	MEDIA	INLET	TEMP.	OUTLET	TEMP.	FLOW RATE	PRESSURE DROP	LIQUID VOL.
1								0.81 dm <sup>3</sup>
2								0.84 dm <sup>3</sup>

PRESSURE VESSEL APPROVAL

PED

CB20-60H (3287000018)

www.alfalaval.com

CUSTOMER NAME / REF. NO.

TOTAL LENGTH 122.0 mm  
 TOTAL WIDTH 94.0 mm  
 TOTAL HEIGHT 324.0 mm

COMPANY / REF.

5/24/2021  
 REV 0